

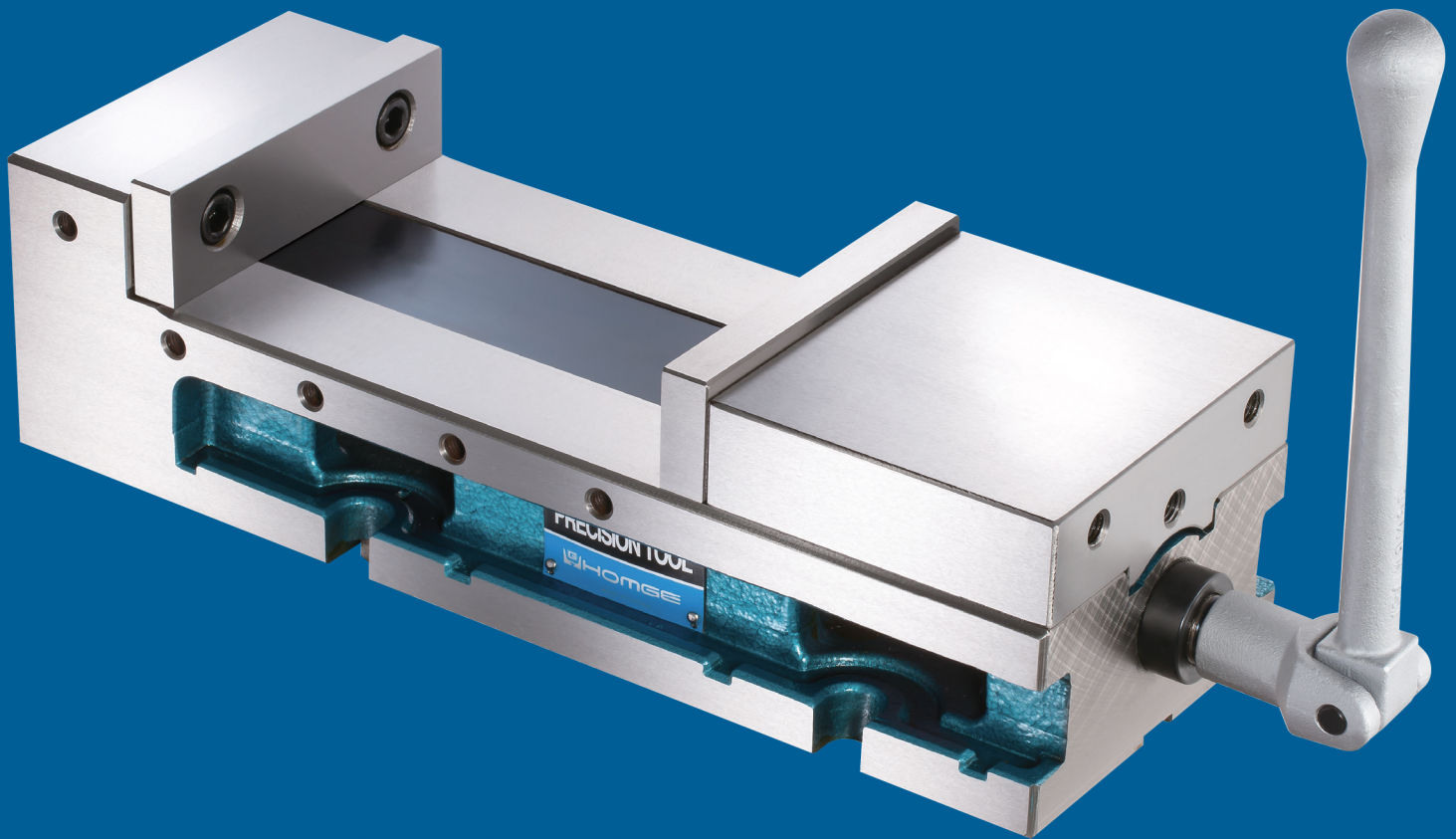
Special Available Until Further Notice



# SUPER-OPEN M/C ANGLE

# WISE

Significantly upgrade CNC Machining Centers



- Super-Big Jaw Opening
- ANGLE-LOCK SYSTEM ensure to pull the work-piece down

## DISTRIBUTED BY:



5500 Tomken Rd, Unit #2  
Mississauga, ON L4W 2Z4  
[www.caliberindustrial.com](http://www.caliberindustrial.com)  
[sales@caliberindustrial.com](mailto:sales@caliberindustrial.com)

Mississauga: 905.624.5524  
Toronto: 416.626.7151  
Toll Free: 1.800.465.5743  
Fax: 905.602.8758



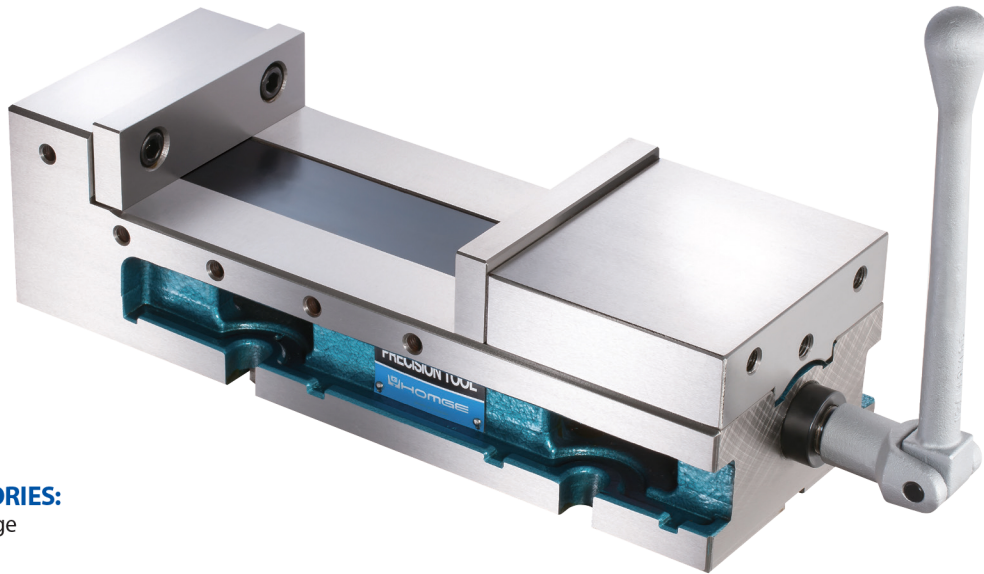
# SUPER-OPEN M/C ANGLE VISE

**PATENTED  
M338717**

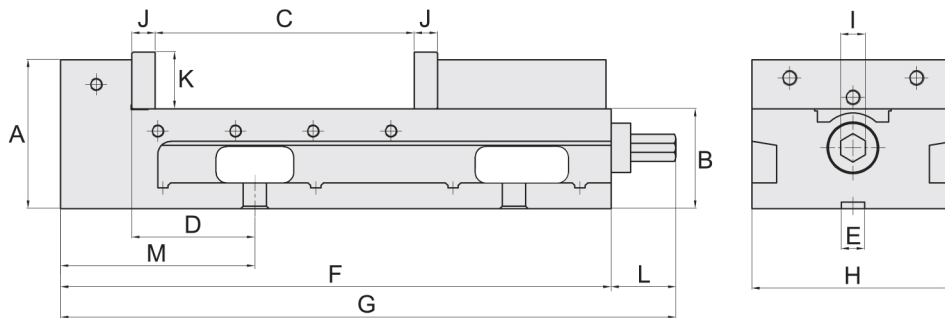
**Model: GH-6" SUPER-OPEN 8"**

**Regular Price = \$699  
Introductory Price = \$599**

- Super-Big Jaw Opening
- Designed with one-piece vise body, both sides grounded precisely
- ANGLE-LOCK SYSTEM ensure to pull the work-piece down
- **Fixed Height** , so several vices can be used together



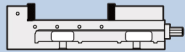
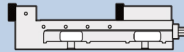
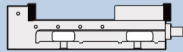
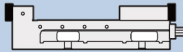
**STANDARD ACCESSORIES:**  
2 pcs of Alignment Wedge



**SPECIFICATIONS** (Material: FCD 55 Ductile Iron. Hardness: HRC 45°)

Unit: mm/inch

MODEL	A	B	C	D	E	F	G	H	I	J	K	L	M	Weight (kg)
GH-6" Super-Open 8"	115	77	205	95	18	425	475	156	19	18	44	50	150	30

MODEL								
GH-6" Super-Open 8"	205	8½	278	11¾	343	13⅞	416	16⅞

