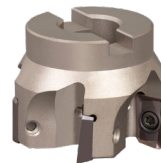


Eco Run 90°

90° MILLING KITS



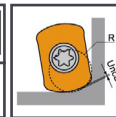
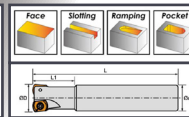
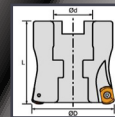
Caliber EDP#	Diameter (D)	Description	Shank Diameter (dm)	# of Inserts	OAL (L)	Neck Length (L1)	Coolant Through	Kit Price
340-709103	5/8"	EM90-D0625-W0750-11-2	3/4"	2	3.50"	1.47"	Yes	\$216.52
c/w 10pcs 340-705915 APMT113508PDER-M PM30P Inserts								
340-709104	3/4"	EM90-D0750-W0750-11-2	3/4"	2	3.50"	1.47"	Yes	\$248.18
c/w 10pcs 340-705915 APMT113508PDER-M PM30P Inserts								
340-709102	1"	EM90-D1000-W1000-11-3	1"	3	4.30"	2.02"	Yes	\$307.76
c/w 10pcs 340-705915 APMT113508PDER-M PM30P Inserts								
340-709100	1"	EM90-D1000-W1000-16-2	1"	2	4.30"	2.02"	Yes	\$291.40
c/w 10pcs 340-705461 APMT160408PDER-M PM30P Inserts								
340-709106	1.25"	EM90-D1250-W1000-16-3	1"	3	4.30"	2.02"	Yes	\$350.99
c/w 10pcs 340-705461 APMT160408PDER-M PM30P Inserts								
340-709107	1.50"	EM90-D1500-W1000-16-3	1"	3	4.30"	2.02"	Yes	\$369.61
c/w 10pcs 340-705461 APMT160408PDER-M PM30P Inserts								

Caliber EDP#	Diameter (D)	Description	Bore Diameter (dm)	# of Inserts	Cutter Height (H)	Coolant Through	Kit Price
340-709108	2"	FM90-D2000-0750-11-6	3/4"	6	1.50"	Yes	\$415.76
c/w 10pcs 340-705915 APMT113508PDER-M PM30P Inserts							
340-709109	2"	FM90-D2000-0750-16-5	3/4"	5	1.50"	Yes	\$431.05
c/w 10pcs 340-705461 APMT160408PDER-M PM30P Inserts							
340-709110	3"	FM90-D3000-1000-16-6	1"	6	2.25"	Yes	\$550.22
c/w 10pcs 340-705461 APMT160408PDER-M PM30P Inserts							
340-709112	4"	FM90-D4000-1000-16-7	1"	7	2.25"	Yes	\$710.35
c/w 10pcs 340-705461 APMT160408PDER-M PM30P Inserts							



CXBN High Feed Mill

Buy a cutter body & GET 10 FREE INSERTS!



Caliber EDP#	Cutter Ø	Neck Length	OAL	Shank Ø	# of Teeth	Kit Price
336-CXBN602062400	5/8"	1.25"	4"	5/8"	2	\$164.79
C/W 10pcs 336-BNMX0603MGCX32HS Inserts						
336-CXBN603075500	3/4"	1.5"	5"	3/4"	3	\$179.46
C/W 10pcs 336-BNMX0603MGCX32HS Inserts						
336-CXBN604100600	1"	2"	6"	1"	4	\$208.73
C/W 10pcs 336-BNMX0603MGCX32HS Inserts						
Caliber EDP#	Cutter Ø	Cutter Length	Bore Ø	# of Teeth	Kit Price	
336-CXBN607200070	2"	1.57"	3/4"	7	\$275.58	
C/W 10pcs 336-BNMX0603MGCX32HS Inserts						

BUY ALL THREE for \$525.00

Eco Run HF

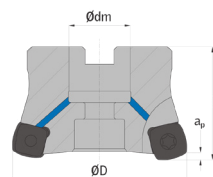
HIGH FEED MILLING KITS



Caliber EDP#	Diameter (D)	Description	Shank Diameter (dm)	# of Inserts	OAL (L)	Neck Length (L1)	Kit Price
340-709012	1.25"	HF12-D1.25-C1.25-12-2	1.25"	2	10"	2.5"	\$370.14
C/W 10pcs 340-705881 SDMT120512-M PM30P Inserts							
340-709013	1.5"	HF12-D1.50-C1.25-12-3	1.25"	3	10"	-	\$407.38
C/W 10pcs 340-705881 SDMT120512-M PM30P Inserts							



Caliber EDP#	Diameter (D)	Description	Bore Diameter (dm)	# of Inserts	Cutter Height (H)	Kit Price
340-709010	2"	HF12-D2.00-0.750-12-4	.750"	4	1.58"	\$444.62
C/W 10pcs 340-705881 SDMT120512-M PM30P Inserts						
340-709014	2.5"	HF12-D2.50-0.750-12-5	.750"	5	1.58"	\$481.86
C/W 10pcs 340-705881 SDMT120512-M PM30P Inserts						
340-709015	3"	HF12-D3.00-1.00-12-6	1.00"	6	1.97"	\$556.34
C/W 10pcs 340-705881 SDMT120512-M PM30P Inserts						
340-709016	4"	HF12-D4.00-1.25-12-8	1.25"	8	1.97"	POA
C/W 10pcs 340-705881 SDMT120512-M PM30P Inserts						
340-709017	5"	HF12-D5.00-1.50-12-10	1.50"	10	2.48"	POA
C/W 10pcs 340-705881 SDMT120512-M PM30P Inserts						



CCMT Non-Coolant Boring Bars

Caliber EDP#	Description	Shank Ø	Length	Kit Price
329-IS05KSCLCR2B	IS05K-SCLCR-2-B	5/16"	5"	\$82.00
c/w 10pcs 340-705476 CCMT 2(1.5)1-PPM P25C Inserts				
Optional Insert 10pcs 340-705924 CCMT 2(1.5)1-PMM M25C				
329-IS06KSCLCR2B	IS06K-SCLCR-2-B	3/8"	5"	\$82.00
c/w 10pcs 340-705476 CCMT 2(1.5)1-PPM P25C Inserts				
Optional Insert 10pcs 340-705924 CCMT 2(1.5)1-PMM M25C				
329-IS08MSCLCR2	IS08M-SCLCR-2	1/2"	6"	\$84.00
c/w 10pcs 340-705476 CCMT 2(1.5)1-PPM P25C Inserts				
Optional Insert 10pcs 340-705924 CCMT 2(1.5)1-PMM M25C				
329-IS08MSCLCR3	IS08M-SCLCR-3	1/2"	6"	\$92.00
c/w 10pcs 340-705353 CCMT 3(2.5)1-PPM P25C Inserts				
Optional Insert 10pcs 340-705933 CCMT 3(2.5)1-PMM M25C				
329-IS10QSCLCR3B	IS10Q-SCLCR-3B	5/8"	7"	\$98.00
c/w 10pcs 340-705353 CCMT 3(2.5)1-PPM P25C Inserts				
Optional Insert 10pcs 340-705933 CCMT 3(2.5)1-PMM M25C				
329-IS12RSCLCR3	IS12R-SCLCR-3	3/4"	8"	\$102.00
c/w 10pcs 340-705353 CCMT 3(2.5)1-PPM P25C Inserts				
Optional Insert 10pcs 340-705933 CCMT 3(2.5)1-PMM M25C				
329-IS16RSCLCR3	IS16R-SCLCR-3	1"	8"	\$105.00
c/w 10pcs 340-705353 CCMT 3(2.5)1-PPM P25C Inserts				
Optional Insert 10pcs 340-705933 CCMT 3(2.5)1-PMM M25C				

Eco  **Run**



DCMT Non-Coolant Boring Bars

Caliber EDP#	Description	Shank Ø	Length	Kit Price
329-IS06KSDJCR2	IS06K-SDJCR-2	3/8"	5"	\$82.00
c/w 10pcs 340-705539 DCMT 2(1.5)1-PPM P25C Inserts				
Optional Inserts 340-706031 DCMT 2(1.5)1-PMM M25C Inserts				
329-IS10QSDJCR2	IS10Q-SDJCR-2	5/8"	7"	\$92.00
c/w 10pcs 340-705539 DCMT 2(1.5)1-PPM P25C Inserts				
Optional Inserts 340-706031 DCMT 2(1.5)1-PMM M25C Inserts				
329-IS12RSDJCR3	IS12R-SDJCR-3	3/4"	8"	\$114.00
c/w 10pcs 340-705383 DCMT 3(2.5)1-PPM P25C Inserts				
Optional Insert 10pcs 340-706041 DCMT 3(2.5)1-PMM M25C				

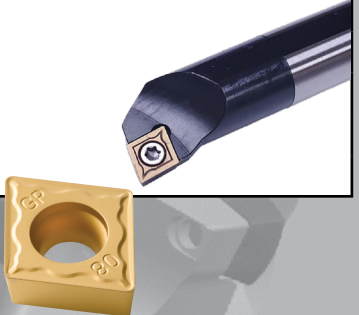
Eco  **Run**



CCMT Coolant Through Boring Bars

Caliber EDP#	Description	Shank Ø	Length	Kit Price
329-IA12RSCLCR3	IA12R-SCLCR-3	3/4"	8"	\$131.00
c/w 10pcs 340-705353 CCMT 3(2.5)1-PPM P25C Inserts				
Optional Insert 10pcs 340-705933 CCMT 3(2.5)1-PMM M25C				
329-IA16RSCLCR3	IA16R-SCLCR-3	1"	8"	\$135.00
c/w 10pcs 340-705353 CCMT 3(2.5)1-PPM P25C Inserts				
Optional Insert 10pcs 340-705933 CCMT 3(2.5)1-PMM M25C				

Eco  **Run**



Mississauga: 905.624.5524
 Toronto: 416.626.7151
 Toll Free: 1.800.465.5743
www.caliberindustrial.com
sales@caliberindustrial.com



ALWAYS BE THE FIRST TO GRAB OUR EXCLUSIVE OFFERS!

Pricing Valid Until **March 31, 2024**