

DISTRIBUTED BY:



Caliber Industrial Supply
5500 Tomken Rd, Unit #2
Mississauga, ON L4W 2Z4
www.caliberindustrial.com

Mississauga: 905.624.5524
Toronto: 416.626.7151
Toll Free: 1.800.465.5743
sales@caliberindustrial.com



Made in Taiwan



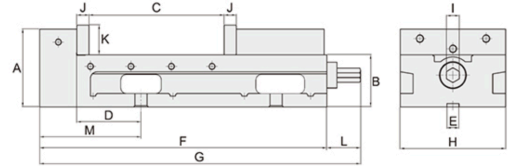
- Super-Big Jaw Opening
- Designed with one-piece vise body, both sides grounded precisely
- ANGLE-LOCK SYSTEM ensure to pull the work-piece down
- Fixed Height, so several vises can be used together

SUPER-OPEN M/C ANGLE VISE

MODELS

GH-6" SUPER-OPEN 8"
GH-8" SUPER-OPEN 12"

Model	Price Each	4 Piece Plus Price
GH-6 *	\$599	\$549
GH-8 **	\$1,199	\$1,149



SPECIFICATIONS (Material: FCD 55 Ductile Iron. Hardness: HRC 50°)

Unit: mm/inch

Model	A	B	C	D	E	F	G	H	I	J	K	L	M	Weight (kg)
GH-6" Super-Open 8"	115	77	205	95	18	425	475	156	19	18	44	50	150	30
GH-8" Super-Open 12"	148	88	300	100	18	560	610	202	19	18	63	50	175	60

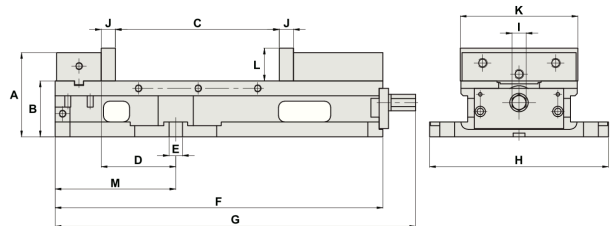
Model				
GH-6" Super-Open 8"	205	8 ¹ / ₅	273	11 ³ / ₂₅
GH-8" Super-Open 12"	300	12	393	15 ¹⁸ / ₂₅

PRECISION ANGLE LOCK VISE (FRONT PULLING TYPE)

MODELS

TV-6" SUPER-OPEN 10"
TV-8" SUPER-OPEN 12"

Model	Price Each	4 Piece Plus Price
TV-6 *	\$649	\$599
TV-8 **	\$1,299	\$1,249

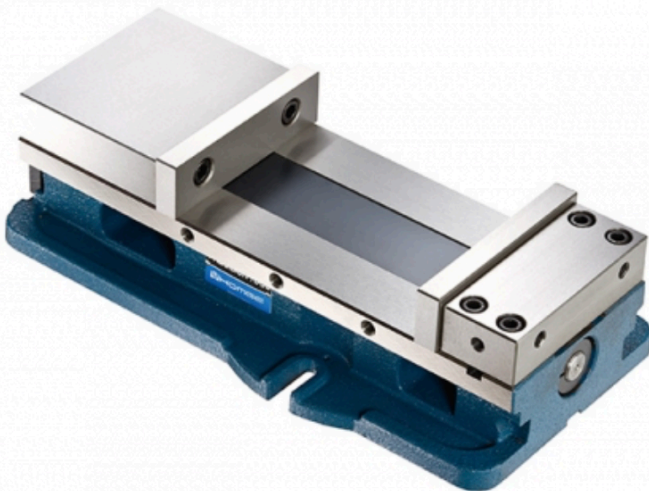


SPECIFICATIONS (Material: FCD 60 ductile iron. Hardness: HRC 50°)

Unit: mm

MODEL	A	B	C	D	E	F	G	H	I
TV-6" Super-Open 10"	113	77	250	100	16	455	484	240	19
TV-8" Super-Open 12"	139	87	305	138	16	570	620	300	19

MODEL	J	K	L	M					Weight (kg)
TV-6" Super-Open 10"	19	160	44	162	250	329	389	468	36
TV-8" Super-Open 12"	24	215	61	230	305	419	469	583	62



- Super-Big Jaw Opening
- Two Sides of Vice Body can be used as Datum Surfaces
- Super-Big Jaw Opening: 10" for TV-6" and 12" for TV-8"
- Advanced clamping style by front pulling, which enhances the clamping force and its accuracy
- Constructed with wider fixed jaw by 4 bolts locked on top and lager keyway to ensure accuracy and durability
- Two sides of Vice Body can be used as datum surfaces
- Fixed height(B), fixed positioning(D), and sided datum surfaces are the advantages of this vice

NOTES

* GH-6 AND TV-6 Models stock locally
** GH-8 and TV-8 Not stock 6-8 week delivery
Promotion Valid Until September 30, 2024