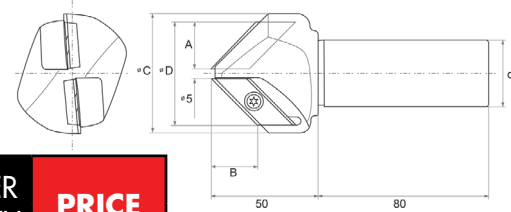
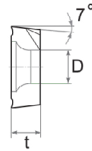
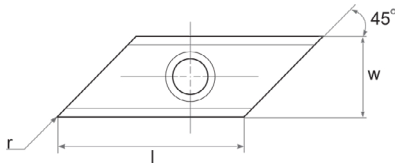


UNION MATERIALS CHAMFER MILL

Designed for large chamfers and countersinking



CHAMFER MILL PART NUMBER	DIMENSIONS						NUMBER OF TEETH	PRICE
	INCL. ANGLE	A	B	ØC	ØD	d		
CSC 0503 1R-30-A	60°	0.570"	1.004"	1.574"	1.340"	1.000"	1	\$260.00
CSC 0503 1R-30-A-2F	60°	0.570"	1.004"	1.850"	1.6929"	1.000"	2	\$349.00
CSC 0503 1R-41-A	82°	0.783"	0.859"	2.200"	1.690"	1.000"	2	\$349.00
CSC 0503 1R-45-A	90°	0.826"	0.807"	2.200"	1.850"	1.000"	2	\$349.00
CSC 0503 1R-60-A	120°	1.003"	0.570"	2.830"	2.200"	1.000"	2	\$399.00



INSERT PART NUMBER	DIMENSIONS					GRADE & PRICE		
	l	w	t	D	r	TX520	SCW200	SCW300
XCET 0310404-ER	0.866"	0.500"	0.177"	0.220"	0.016"	\$69.00	\$80.00	\$86.00

TX520 - TiN cermet for finishing applications

SCW200 - Coated carbide grade for heavier duty applications

SCW300 - TiALN coated carbide for higher speed applications



**ALL ITEMS
IN STOCK**

NEW SCW300

TiALN Coated

Up To

50%

LONGER TOOL LIFE

Than TiN coated inserts!

Spare Screws

SDT050

\$9.29 Each

Inserts sold in
PACKS of FIVE

Distributed by



Call: 905.624.5524

Email: sales@caliberindustrial.com

Prices Valid as of
MARCH 16, 2026
Until Further Notice

Ref. No 286-2603-1C